



GMT MONTHLY MEMBERSHIP PROGRESS REPORT

Results as of: 6/30/2020

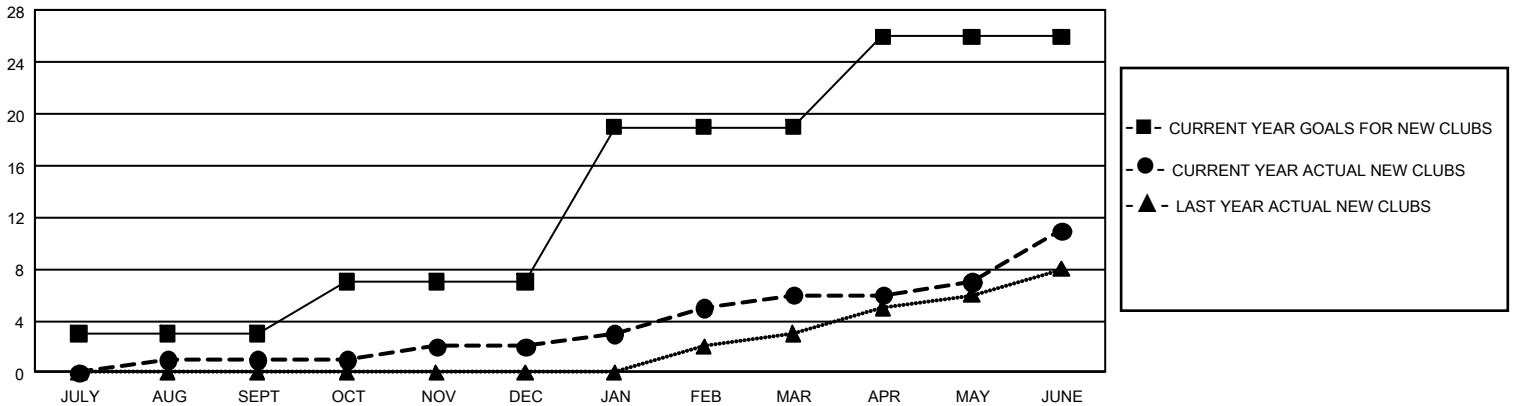
GMT Constitutional Area 1, Group F

GMT: OPEN

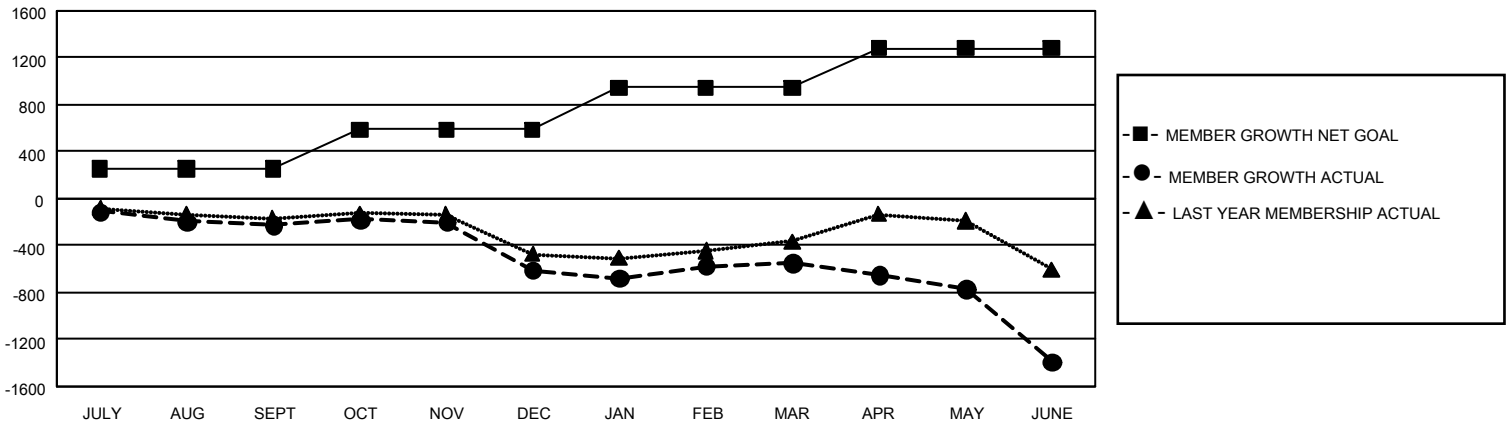
REPORT DOES NOT INCLUDE CLUBS IN UNDISTRICTED AREAS.

Clubs				Members			
RESULTS FOR 2019-2020				RESULTS FOR 2019-2020			
QUARTER	NEW CLUB GOAL	NEW CLUBS	DROPPED CLUBS	QUARTER	MEMBER GROWTH NET GOAL	MEMBER GROWTH ACTUAL	DROPPED MEMBERS ACTUAL (including transfers)
JULY/AUG/SEPT	9	1	5	JULY/AUG/SEPT	750	555	691
OCT/NOV/DEC	12	1	16	OCT/NOV/DEC	1,020	578	908
JAN/FEB/MAR	36	4	6	JAN/FEB/MAR	1,068	678	506
APR/MAY/JUNE	21	5	9	APR/MAY/JUNE	1,011	449	1,224

GOALS AND ACTUAL NEW CLUBS CUMULATIVE



GOALS AND ACTUAL MEMBERS CUMULATIVE



DROPPED CLUBS: 34	514 CLUBS OF 924 ADDED 1 OR MORE NEW MEMBERS	GENDER DISTRIBUTION MALE 15,305 (63.45%) FEMALE 8,818 (36.55%)
DROPPED MEMBERS DECEASED 416 CLUB CANCELLED 299 OTHER 2,612 TOTAL 3,327	CLICK HERE FOR CUMULATIVE MEMBERSHIP DATA	TOTAL FAMILY UNIT MEMBERS 4,348 FAMILY MEMBERS PAYING HALF DUES 2,258